



# Hunting For Enhanced Wildlife Habitat?

BASF Makes Your Timberland More Attractive To Whitetail, Wild Turkey, Quail And Other Wildlife...And More Valuable To You.

Professional  
Vegetation  
Management



The Chemical Company

**ARSENAL**<sup>®</sup>  
herbicide

**CHOPPER**<sup>®</sup>  
herbicide

**OneStep**<sup>®</sup>  
herbicide



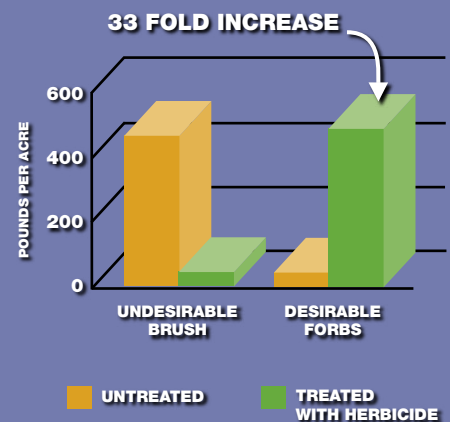
## See More Bucks, Toms And Bobwhites. (And Jacksons, Grants And Franklins...)

Improving wildlife habitat makes your land more valuable. It provides more wildlife, better hunting, commands premium lease rates and simply makes your forestland more enjoyable. And nothing helps you manage your land for wildlife like BASF products and professional sales staff. Whether you manage for deer, wild turkey, bobwhite quail or a variety of other wildlife, **Chopper® herbicide**, **Arsenal® herbicide Applicators Concentrate (Arsenal AC)** and **OneStep® herbicide** can control unwanted vegetation and encourage the growth of wildlife-preferred food sources.

For example, forbs and legumes (preferred food of whitetail deer) increased 400% on a site treated with **Arsenal AC**. Total deer forage doubled from 25 to 51 pounds per acre.<sup>1</sup> And treated quail runs produced more than four times as much game bird food compared to areas that were mowed or treated with other herbicides.<sup>2</sup>

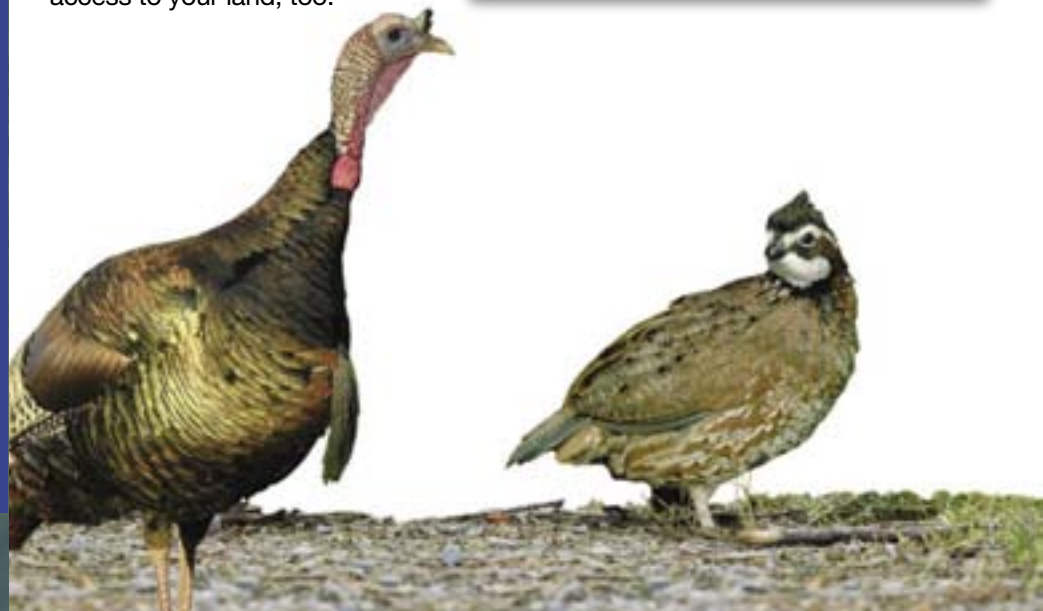
With those kinds of results, you'll attract larger, more diverse wildlife populations, and plenty of hunters and outdoor recreationists willing to pay for access to your land, too.

### WILDLIFE FOOD SUPPLY INCREASES WITH USE OF BASF HERBICIDES<sup>1</sup>



Professional  
Vegetation  
Management

 **BASF**  
The Chemical Company





## Get More From Your Land.

Healthy wildlife habitat results from proper forestland management. To be successful, a land management plan must be proactive throughout the entire life cycle of your forest.

### SITE PREPARATION:

An application of **OneStep** prior to planting controls a broad spectrum of woody brush and trees, and more than 120 species of grasses, broadleaf weeds, vines and brambles. This assures higher survival rates of newly planted pines, as well as faster growth.

### HERBACEOUS WEED CONTROL:

In the first and second year after planting, broadleaf weeds, grasses and vines can slow the growth of pines. To boost seedling survival and growth rates, a herbaceous weed control treatment with **Arsenal AC** can control the weeds that compete with pines for moisture, sunlight, nutrients and rooting space.

### PINE RELEASE:

In young pine stands that did not receive an intensive site preparation treatment, hardwood brush growing from established root systems or pieces of stem left in the soil can threaten survival and slow the growth of the planted pines. To increase the growth rate of pine stands and encourage the growth of wildlife-preferred food sources, use a pine release treatment with **Arsenal AC**.

### MID-ROTATION RELEASE:

A mid-rotation release treatment using **Arsenal AC** or **Chopper** boosts pine growth in stands that missed out on earlier hardwood control treatments or in thinned stands that have been re-invaded by hardwood brush. Removing the brush allows sunlight to reach the forest floor, which promotes the growth of forbs and legumes that are favored by wildlife, like deer and turkey.

**Managing your forest properly not only enhances wildlife habitat, it opens up your land and increases visibility by controlling unwanted underbrush. This makes your land more aesthetically pleasing and more valuable for recreation and hunting.**

### *How (And When) It Works.*

*The active ingredient in **Arsenal AC** and **Chopper** works on an enzyme found only in plants, not in birds, mammals, fish, insects or humans. It provides such effective broad-spectrum control of invasive hardwood brush that only one application is necessary every 10 to 15 years. That can save you hundreds of dollars in labor costs versus mowing and controlled burning alone.*



<sup>1</sup>Hurst, G.A. 1987. Vegetative responses to imazapyr for pine release. Proceedings of the Southern Weed Science Society. 40:247.

<sup>2</sup>Witt, J.S., A.S. Johnston, K.V. Miller, J.J. Brooks, P.M. Dougherty, P.B. Bush. 1993. "Response of wildlife food plants to site preparation in the Georgia Piedmont. In: Forestry and Wildlife Workshop: Technology and Environmental Issues." Clemson University, September 1-3, 1993.



**QVM** is a set of principles that creates and sustains healthy habitats through professional, ethical and responsible practices.

Learn more at:  
[www.vmanswers.com/QVM](http://www.vmanswers.com/QVM)

# Take A Stand For Wildlife.

BASF is proud to partner with these leading conservation organizations to promote the benefits of enhanced wildlife habitat.



**National Wild Turkey Federation:** The NWTF's more than 500,000 members have helped their partners increase wild turkey populations from 1.3 million to nearly 7 million birds in addition to conserving more than 9.6 million acres. For more information, visit [www.nwtf.org](http://www.nwtf.org)



**Quality Deer Management Association:** The QDMA is a national, nonprofit conservation organization dedicated to ethical hunting, sound deer management and preservation of the deer-hunting heritage. For better deer and better deer hunting, visit [www.qdma.org](http://www.qdma.org)

Increase the value of your land by improving the wildlife habitat in your pine stand with **Quality Vegetation Management™** from BASF. For more information, call **1-800-545-9525** or visit [www.vmanswers.com](http://www.vmanswers.com).

Always read and follow label directions.  
Arsenal, Chopper and OneStep are registered trademarks and Quality Vegetation Management is a trademark of BASF.  
©2006 BASF Corporation. All rights reserved. APN 05-15-104-0004a